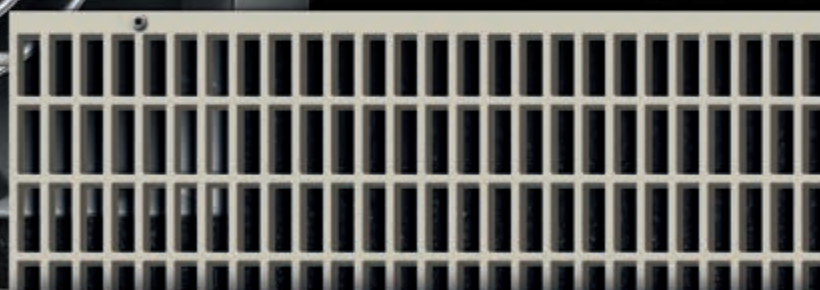
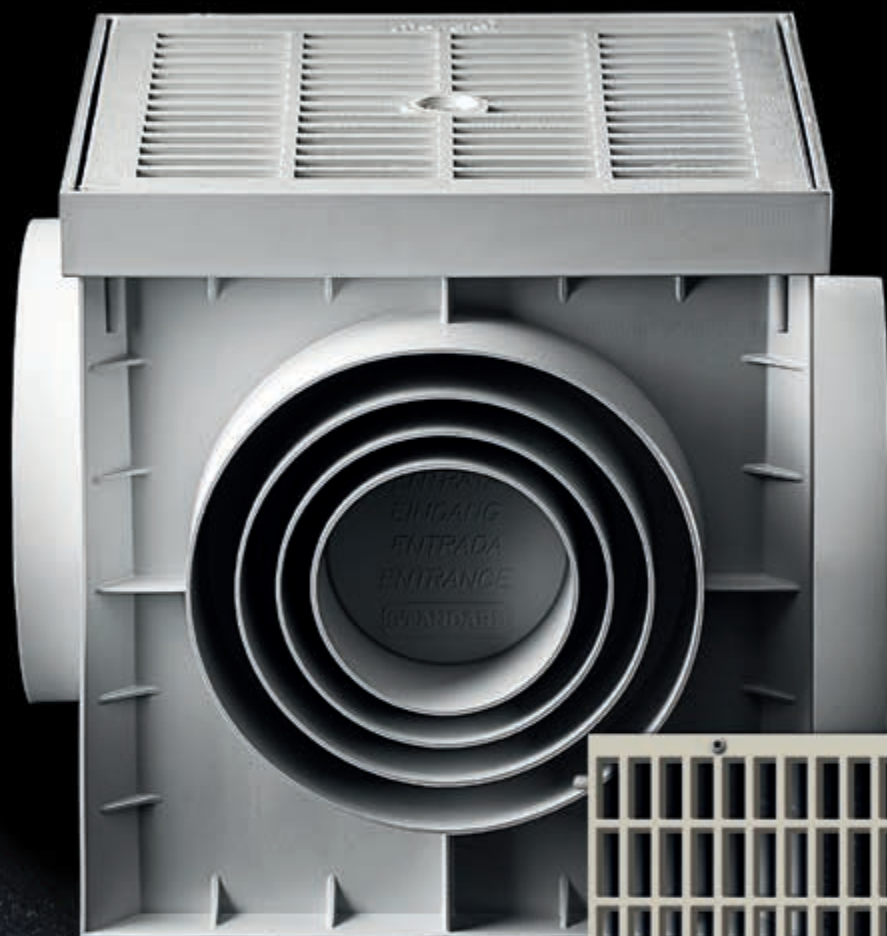


eternoivica

CATALOGUE 2020
IT/EN



MONDIAL

IT

Prodotti per il drenaggio dell'acqua.

La linea Mondial offre una serie di accessori realizzati in polipropilene per il controllo, la gestione e la canalizzazione dell'acqua: una serie completa di griglie, canalette, pozzetti, chiusini e raccordi con un'eccezionale resistenza al gelo e agli agenti atmosferici.

.....

EN

Products for water drainage.

The Mondial Line offers a range of accessories made of polypropylene for water control, management and channelling: a complete set of ducts, cockpits, drains and fittings with exceptional frost resistance and atmospheric agents.

LINEA MONDIAL MONDIAL LINE 04

Introduzione *Introduction*

**L'ACQUA GESTITA A REGOLA D'ARTE
WATER MANAGED IN A WORKMANLIKE FASHIONS** 08

Pozzetto - Anello di prolunga *Drain box - Extension ring for drain box*

Raccordi speciali *Special pipe-fittings*

Tramezza - Sifone a campana *Partition - Bell-shaped syphone*

Telaio, coperchio in polipropilene *Polypropilene frame, cover*

Coperchio e griglia rinforzati in polipropilene *Polypropilene reinforced cover and grating*

Griglia in polipropilene *Polypropilene grating*

Coperchio con maniglia "Strong" *Cover with handle "Strong"*

Griglia con maniglia "Strong" *Grating with handle "Strong"*

Telaio e sigillo in polipropilene *Polypropylene frame and paving cover*

Pozzetto pluviale sifonato con uscita laterale *Rain trap with side exit*

Pozzetto pluviale sifonato con uscita verticale *Rain trap with vertical exit*

Chiusino sifonato e raccordi in PP *Polypropylene floor drains and connections*

Telaio + Coperchio con sifone centrale *Frame + Drain cover with central siphon*

**CANALETTE MODULARI E GRIGLIE METALLICHE
MODULAR GUTTERS AND METALLIC GRATINGS** 24

Canaletta modulare "Maxima" in PP *PP modular channel "Maxima" type*

Canaletta modulare "Special" in PP *PP modular channel "Special" type*

Canaletta modulare "Standard" in PP *PP modular channel "Standard" type*

Griglie in PP per canaletta *PP grating for modular channel*

Griglie metalliche per canaletta classe A15 e C250 *Metal gratings for modular channel class A15 and C250*

Griglie metalliche per canaletta classe A15 e B125 *Metal gratings for modular channel class A15 and B125*



LINEA MONDIAL

MONDIAL LINE

INTRODUZIONE

INTRODUCTION

IT

Canalizzazione dell'acqua: il tocco degli esperti. Prodotti che si contraddistinguono per la loro elevata qualità e semplicità di posa in opera.

Una serie di pozzetti e canalette in polipropilene, materiale che mantiene inalterate nel tempo le proprie caratteristiche, grazie a un'eccezionale resistenza al gelo e agli agenti atmosferici e chimici.

Una serie completa di griglie (anche metalliche), canalette, chiusini e raccordi.

L'acqua è controllata, canalizzata, gestita.

EN

Water control: the expert touch. Products characterized by high quality and ease of installation.

A series of drain boxes and channels made of polypropylene: a material that maintains its characteristics over time, thanks to its exceptional resistance to frost, weathering and chemicals.

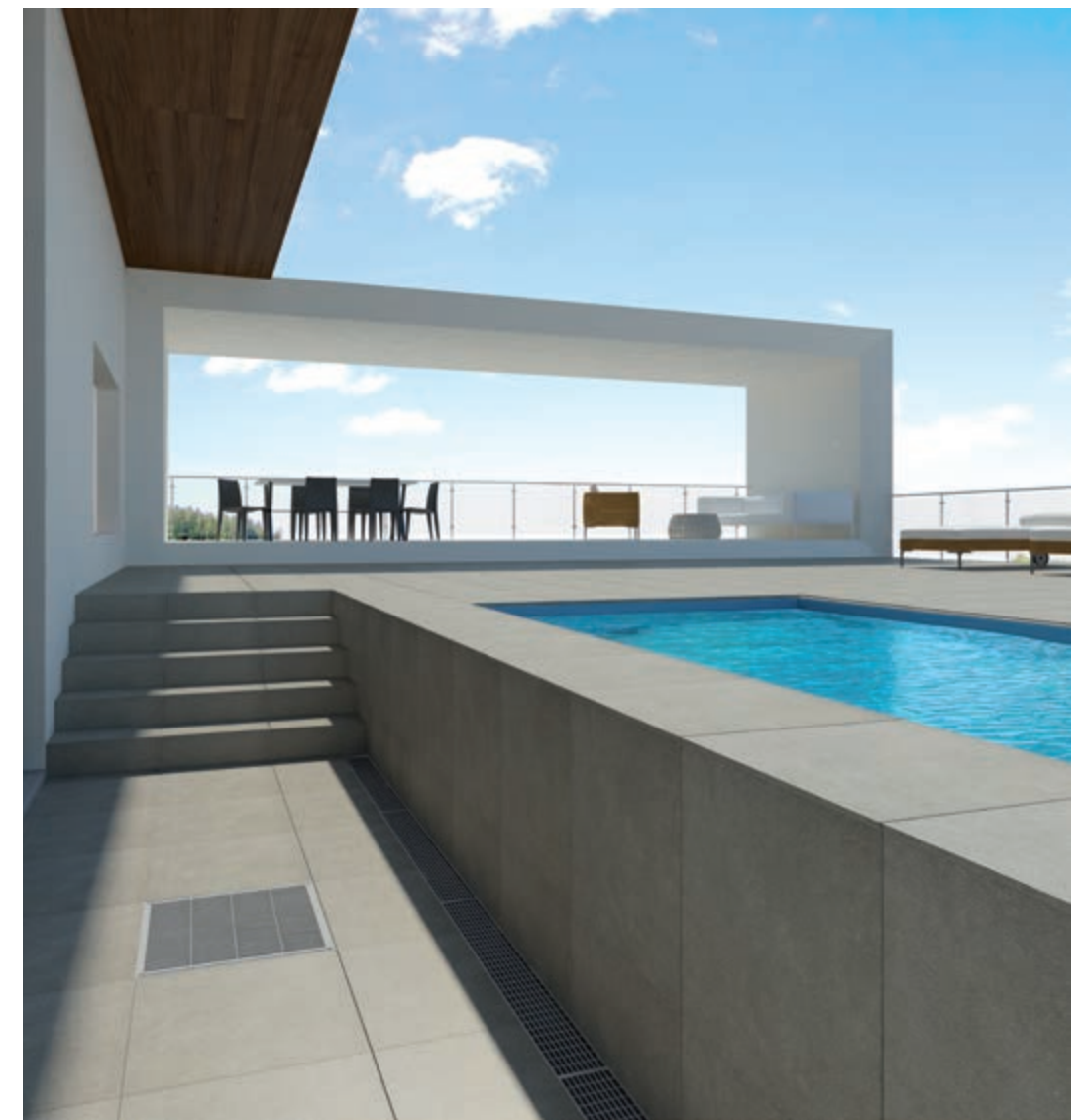
A complete set of channels, covers, floor drains and gratings, even in metal.

The water is properly controlled, channelled and managed.



6

ETERNO IVICA · MONDIAL



IT

Dagli esperti dell'impermeabilizzazione, una serie di pozzetti completi di raccordi e kit accessori, per garantire il perfetto deflusso dell'acqua.

Sono il risultato di un'esperienza di oltre sessant'anni nella gestione dell'acqua e delle impermeabilizzazioni, che garantisce prodotti di alta qualità e durata, pensati per una posa semplice e veloce, e un'efficienza di lunga durata e massima affidabilità.

EN

A series of wells complete with couplings and accessories, developed by waterproofing experts to ensure perfect water drainage.

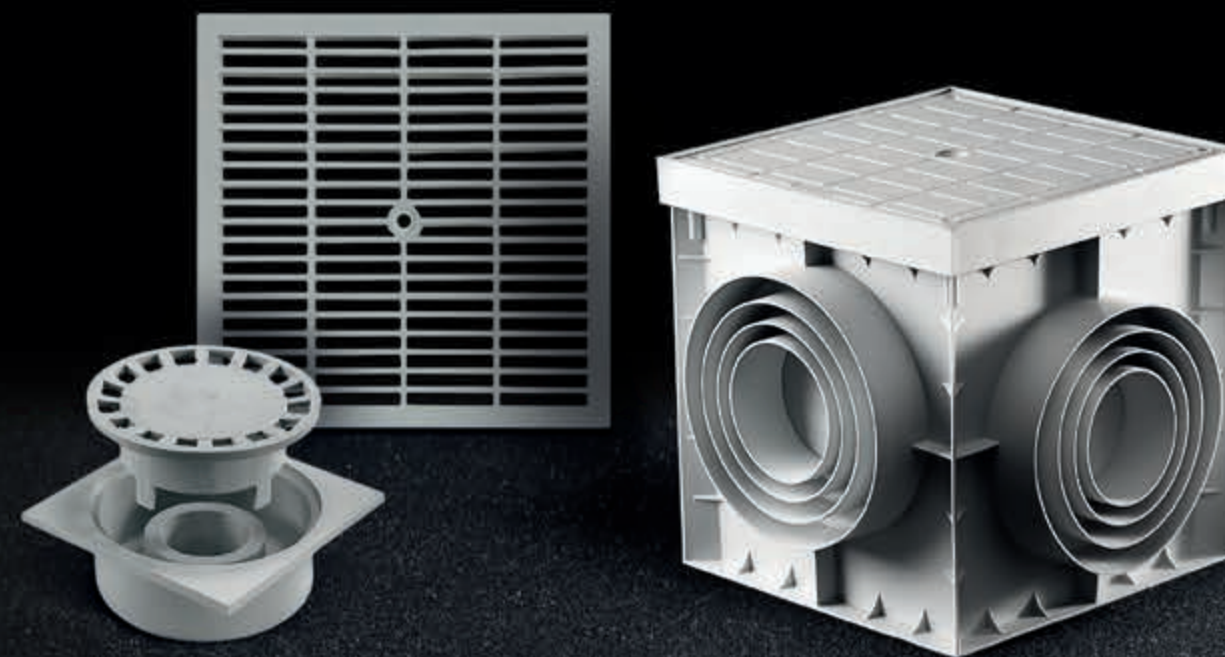
Conceived thanks to over forty years experience in the field of water management and waterproofing, with the aim of providing high-quality and long-lasting products designed for quick and easy installation, long-term efficiency and maximum reliability.

7

ETERNO IVICA · MONDIAL

L'ACQUA GESTITA A REGOLA D'ARTE

**WATER MANAGED
IN A WORKMANLIKE FASHION**



POZZETTO - ANELLO DI PROLUNGA

DRAIN BOX - EXTENSION RING FOR DRAIN BOX

RACCORDI SPECIALI

SPECIAL PIPE-FITTINGS

TRAMEZZA - SIFONE A CAMPANA

PARTITION - BELL-SHAPED SYPHONE

TELAIO, COPERCHIO IN PP

POLYPROPYLENE FRAME, COVER

COPERCHIO E GRIGLIA RINFORZATI IN PP

POLYPROPYLENE REINFORCED COVER AND GRATING

GRIGLIA IN POLIPROPILENE

POLYPROPYLENE GRATING

COPERCHIO CON MANIGLIA "STRONG"

COVER WITH HANDLE "STRONG"

GRIGLIA CON MANIGLIA "STRONG"

GRATING WITH HANDLE "STRONG"

TELAIO E SIGILLO IN POLIPROPILENE

POLYPROPYLENE FRAME AND PAVING COVER

POZZETTO PLUVIALE SIFONATO, USCITA LATERALE

RAIN TRAP WITH SIDE EXIT

POZZETTO PLUVIALE SIFONATO, USCITA VERTICALE

RAIN TRAP WITH VERTICAL EXIT

CHIUSINO SIFONATO E RACCORDI IN PP

POLYPROPYLENE FLOOR DRAINS AND CONNECTIONS

TELAIO + COPERCHIO CON SIFONE CENTRALE

FRAME + DRAIN COVER WITH CENTRAL SIPHON

8

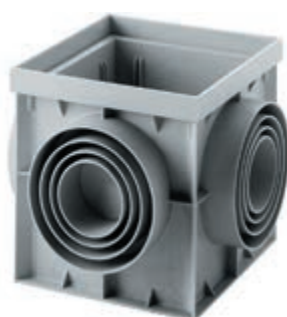
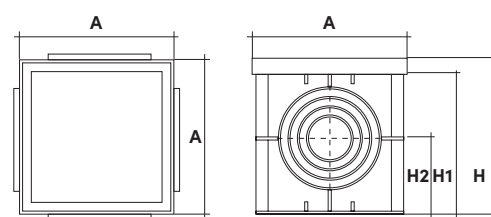
ETERNO IVICA - MONDIAL

9

ETERNO IVICA - MONDIAL

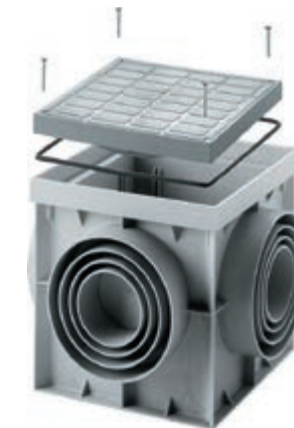
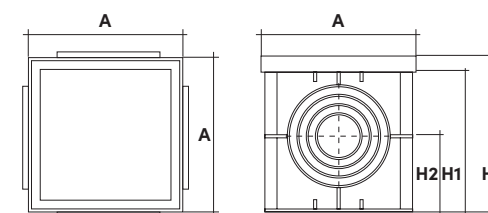
POZZETTO - ANELLO DI PROLUNGA

DRAIN BOX - EXTENSION RING FOR DRAIN BOX



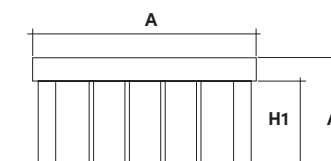
Pozzetto in polipropilene
Polypropylene drain box

| CODICE CODE | TIPO TYPE | MISURE POZZETTO DRAIN BOX SIZES | PREDISPOSIZIONE Ø TUBI IN ENTRATA ENTRANCE PIPES CONNECTION | PREDISPOSIZIONE Ø TUBI IN USCITA EXIT PIPES CONNECTION | A | H | H1 | H2 | PAG LISTINO PRICE LIST PAGE | PZ | PZ |
|----------------|--------------|--|--|---|-----|-----|-----|-----|--------------------------------------|----|-----|
| G001200200 | Standard | 200 x 200 | 63 82 100 125 | 63 82 100 125 | 195 | 200 | 178 | 100 | 6 | - | 240 |
| G000200200 | Export | 200 x 200 | 50 75 90 110 125 | 50 75 90 110 125 | 195 | 200 | 178 | 100 | 6 | - | 240 |
| G001300300 | Standard | 300 x 300 | 60 80 100 125 140 | 60 80 100 125 140 | 292 | 297 | 270 | 140 | 6 | - | 96 |
| G000300300 | Export | 300 x 300 | 75 90 110 125 140 | 75 90 110 125 140 | 292 | 297 | 270 | 140 | 6 | - | 72 |
| G001400400 | Standard | 400 x 400 | 60 80 100 125 140 160 200 250 | 60 80 100 125 140 160 200 250 | 393 | 396 | 366 | 200 | 6 | - | 36 |
| G001550550 | Standard | 550 x 550 | 160 200 250 300 | 160 200 250 300 | 545 | 520 | 480 | 260 | 6 | - | 16 |



Pozzetto con coperchio rinforzato a chiusura ermetica pozzetto in polipropilene
Watertight closure drain box with road-ways cover

| CODICE CODE | TIPO TYPE | MISURE POZZETTO DRAIN BOX SIZES | PREDISPOSIZIONE Ø TUBI IN ENTRATA ENTRANCE PIPES CONNECTION | PREDISPOSIZIONE Ø TUBI IN USCITA EXIT PIPES CONNECTION | A | H | H1 | H2 | PAG LISTINO PRICE LIST PAGE | PZ | PZ |
|----------------|--------------|--|--|---|-----|-----|-----|-----|--------------------------------------|----|-----|
| G004000200 | Standard | 200 x 200 | 63 82 100 125 | 63 82 100 125 | 195 | 200 | 178 | 100 | 6 | - | 240 |
| G004001200 | Export | 200 x 200 | 50 75 90 110 125 | 50 75 90 110 125 | 195 | 200 | 178 | 100 | 6 | - | 240 |
| G004000300 | Standard | 300 x 300 | 60 80 100 125 140 | 60 80 100 125 140 | 292 | 297 | 270 | 140 | 6 | - | 84 |
| G004001300 | Export | 300 x 300 | 75 90 110 125 140 | 75 90 110 125 140 | 292 | 297 | 270 | 140 | 6 | - | 84 |
| G004000400 | Standard | 400 x 400 | 60 80 100 125 140 160 200 250 | 60 80 100 125 140 160 200 250 | 393 | 396 | 366 | 200 | 6 | - | 30 |

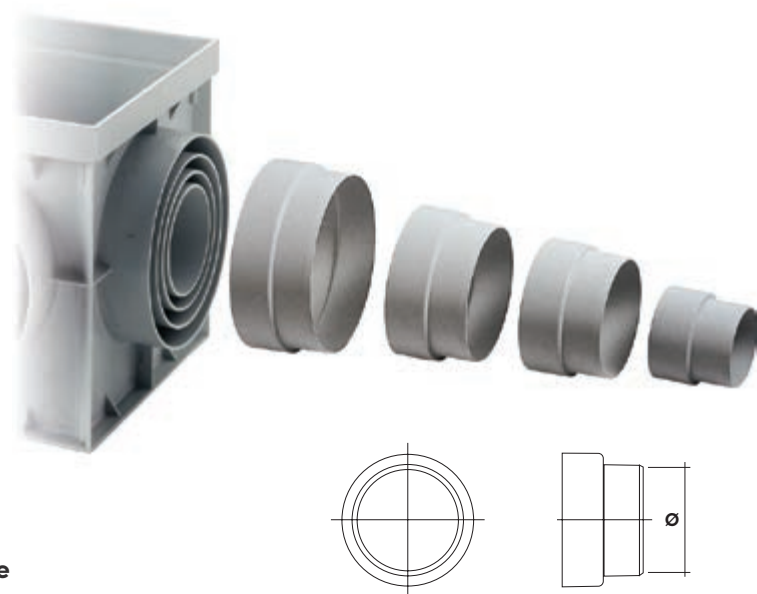


Anello di prolunga
Extension ring

| CODICE CODE | MISURA SIZE | A | H | H1 | PAG LISTINO PRICE LIST PAGE | PZ | PZ |
|----------------|----------------|-----|-----|-----|--------------------------------|----|-----|
| G003010300 | 300 x 300 | 292 | 120 | 95 | 6 | - | 304 |
| G003010400 | 400 x 400 | 395 | 128 | 100 | 6 | - | 120 |
| G003010550 | 550 x 550 | 540 | 130 | 100 | 6 | - | 92 |

RACCORDI SPECIALI

SPECIAL PIPE-FITTINGS

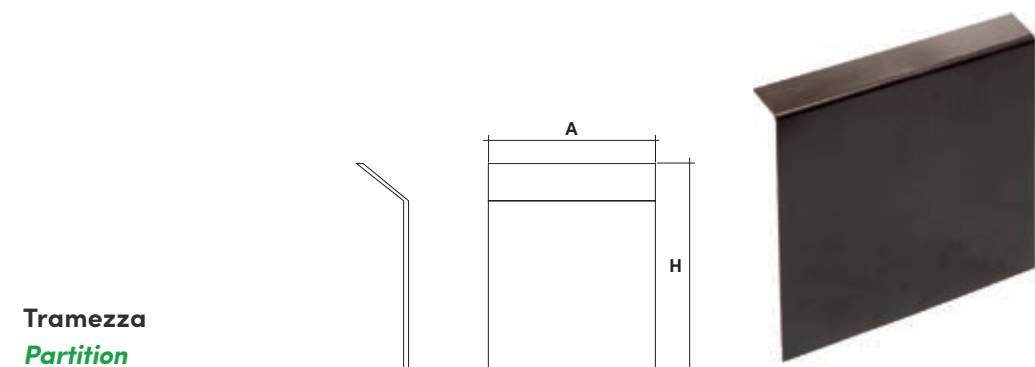


Pozzetto in polipropilene
Polypropylene drain box

| CODICE CODE | MISURE POZZETTO DRAIN BOX SIZES | USCITA EXIT | PAG LISTINO PRICE LIST PAGE | PZ | PZ |
|----------------|------------------------------------|----------------|-----------------------------------|--------|--------|
| G038007075 | 200 x 200 Export | Ø 75 | 7 | 100 | 4200 |
| G038007110 | 300 x 300 Export | Ø 110 | 7 | 100 | 3000 |
| G038007125 | 300 x 300 Export | Ø 125 | 7 | 7 | 2100 |
| G038007150 | 400 x 400 / 500 x 500 | Ø 150 | 7 | 7 | 1125 |

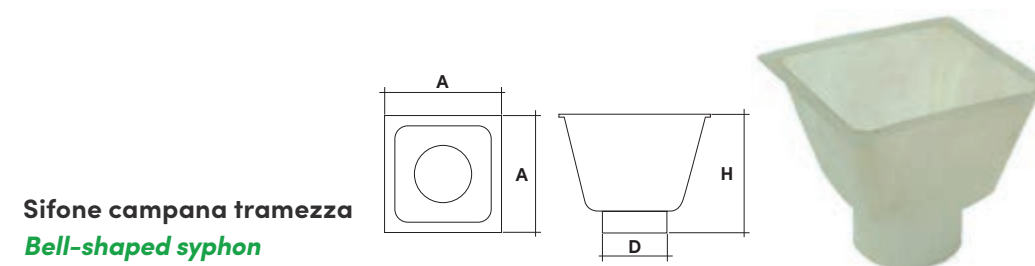
TRAMEZZA - SIFONE A CAMPANA

PARTITION - BELL-SHAPED SYPHON



Tramezza
Partition

| CODICE CODE | MISURE POZZETTO DRAIN BOX SIZES | A | H | PAG LISTINO PRICE LIST PAGE | PZ | PZ |
|----------------|------------------------------------|-----|-----|-----------------------------------|--------|--------|
| G002200200 | 200 x 200 | 158 | 123 | 7 | - | - |
| G002300300 | 300 x 300 | 250 | 242 | 7 | - | - |
| G002400400 | 400 x 400 | 250 | 255 | 7 | - | - |
| G002550550 | 550 x 550 | 497 | 373 | 7 | - | - |



Sifone campana tramezza
Bell-shaped syphon

| CODICE CODE | MISURE POZZETTO DRAIN BOX SIZES | B | H | D | PAG LISTINO PRICE LIST PAGE | PZ | PZ |
|----------------|------------------------------------|-----|-----|-----|-----------------------------------|--------|--------|
| G010000300 | 300 x 300 | 250 | 210 | 122 | 7 | - | - |
| G010000400 | 400 x 400 | 353 | 297 | 150 | 7 | - | - |

TELAIO, COPERCHIO IN POLIPROPILENE

POLYPROPYLENE FRAME, COVER



Coperchio Cover

| CODICE CODE | MISURE SIZE | B | H1 | PAG LISTINO PRICE LIST PAGE | PZ | PZ |
|----------------|----------------|-----|----|--------------------------------------|----|-----|
| H034200200 | 200 x 200 | 185 | 19 | 8 | - | 600 |
| H034300300 | 300 x 300 | 280 | 21 | 8 | - | 264 |
| H034400400 | 400 x 400 | 380 | 25 | 8 | - | 144 |

Coperchio verde Green cover

| CODICE CODE | MISURE SIZE | B | H1 | PAG LISTINO PRICE LIST PAGE | PZ | PZ |
|----------------|----------------|-----|----|--------------------------------------|----|-----|
| H034200202 | 200 x 200 | 185 | 19 | 8 | - | 600 |
| H034300302 | 300 x 300 | 280 | 21 | 8 | - | 264 |
| H034400402 | 400 x 400 | 380 | 25 | 8 | - | 144 |

Telaio Frame

| CODICE CODE | MISURE SIZE | A | B | C | H1 | PAG LISTINO PRICE LIST PAGE | PZ | PZ |
|----------------|----------------|-----|-----|-----|----|--------------------------------------|----|-----|
| H031200200 | 200 x 200 | 213 | 185 | 160 | 39 | 8 | - | 500 |
| H031300300 | 300 x 300 | 323 | 280 | 250 | 41 | 8 | - | 350 |
| H031400400 | 400 x 400 | 422 | 380 | 349 | 45 | 8 | - | 252 |
| H031550550 | 550 x 550 | 581 | 534 | 496 | 53 | 8 | - | 140 |

Telaio verde Green frame

| CODICE CODE | MISURE SIZE | A | B | C | H1 | PAG LISTINO PRICE LIST PAGE | PZ | PZ |
|----------------|----------------|-----|-----|-----|----|--------------------------------------|----|-----|
| H031200202 | 200 x 200 | 213 | 185 | 160 | 39 | 8 | - | 500 |
| H031300302 | 300 x 300 | 323 | 280 | 250 | 41 | 8 | - | 350 |
| H031400402 | 400 x 400 | 422 | 380 | 349 | 45 | 8 | - | 252 |

COPERCHIO E GRIGLIA RINFORZATI IN POLIPROPILENE

POLYPROPYLENE REINFORCED COVER GRATING

Coperchio rinforzato cl. A15 Reinforced cover cl. A15

| CODICE CODE | MISURE SIZE | B | H1 | PAG LISTINO PRICE LIST PAGE | PZ | PZ |
|----------------|----------------|-----|----|--------------------------------------|----|-----|
| H035200200 | 200 x 200 | 185 | 19 | 8 | - | 600 |
| H035300300 | 300 x 300 | 280 | 21 | 8 | - | 264 |
| H035400400 | 400 x 400 | 380 | 25 | 8 | - | 138 |
| H035550550 | 550 x 550 | 528 | 36 | 8 | - | 60 |



Griglia rinforzata CL. A15 Reinforced grating CL. A15

| CODICE CODE | MISURE SIZE | B | H1 | PAG LISTINO PRICE LIST PAGE | PZ | PZ |
|----------------|----------------|-----|----|--------------------------------------|----|-----|
| H033200200 | 200 x 200 | 185 | 19 | 9 | - | 600 |
| H033300300 | 300 x 300 | 280 | 21 | 9 | - | 264 |
| H033400400 | 400 x 400 | 380 | 25 | 9 | - | 120 |
| H033550550 | 550 x 550 | 528 | 36 | 9 | - | 60 |



Classi di carico secondo norma DIN 19580 Loading class according to norm DIN 19580

| SIMBOLI SYMBOLS | CLASSI CLASSES | RESISTENZA RESISTANCE | DESCRIZIONE - CAMPI D'IMPIEGO DESCRIPTION - SECTOR OF USE |
|--------------------|-------------------|--------------------------|--|
| | A 15 | kN 15 | Superfici adatte al traffico leggero, passaggi pedonali, zone verdi, balconi, terrazze. <i>Surface suitable to light traffic, crosswalks, green areas, balconies, terraces.</i> |
| | B 125 | kN 125 | Sentieri, zone pedonali, parcheggi auto, parcheggi sopraelevati. <i>Paths, pedestrian areas, parking lots, parking garages.</i> |
| | C 250 | kN 250 | Canalizzazioni al bordo di strade, accessi a parcheggi auto e parcheggi sopraelevati. <i>Canalizations along roads, entrances to parking lots and parking garages.</i> |

GRIGLIA IN POLIPROPILENE

POLYPROPYLENE GRATING



Griglia
Grating

| CODICE CODE | MISURE SIZE | B | H1 | PAG LISTINO PRICE LIST PAGE | PZ | PZ |
|----------------|----------------|-----|----|-----------------------------------|----|-----|
| H032200200 | 200 x 200 | 185 | 19 | 9 | - | 600 |
| H032300300 | 300 x 300 | 280 | 21 | 9 | - | 240 |
| H032400400 | 400 x 400 | 380 | 25 | 9 | - | 144 |



Griglia verde
Green grating

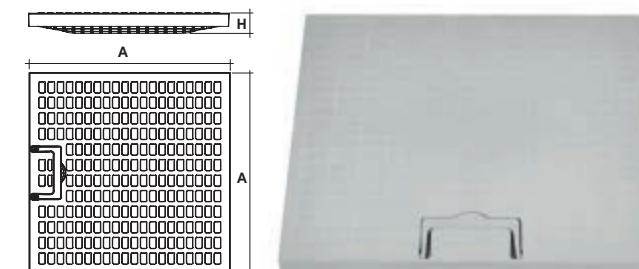
| CODICE CODE | MISURE SIZE | B | H1 | PAG LISTINO PRICE LIST PAGE | PZ | PZ |
|----------------|----------------|-----|----|-----------------------------------|----|-----|
| H032200202 | 200 x 200 | 185 | 19 | 9 | - | 600 |
| H032300302 | 300 x 300 | 280 | 21 | 9 | - | 240 |
| H032400402 | 400 x 400 | 380 | 25 | 9 | - | 144 |

COPERCHIO CON MANIGLIA "STRONG"

COVER WITH HANDLE "STRONG"

> COMPATIBILE CON POZZETTI E TELAI
MATERIALE: POLIPROPILENE COPOLIMERO CARICATO CON ANTI U.V.

> COMPATIBLE WITH DRAIN BOXES AND FRAMES
MATERIAL: COPOLYMER POLYPROPYLENE WITH ANTI-UV



Coperchio
Cover

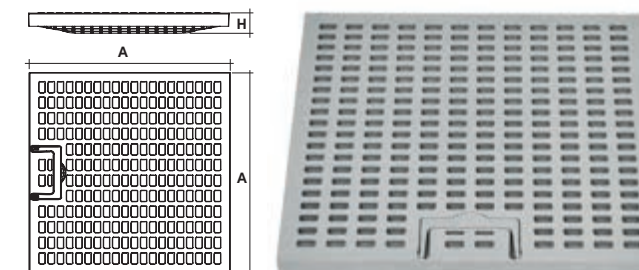
| CODICE CODE | MISURE SIZE | A | H | RESISTENZA RESISTANCE | PAG LISTINO PRICE LIST PAGE | PZ | PZ |
|----------------|----------------|-----|----|--------------------------|-----------------------------------|----|------|
| H039032020 | 200 x 200 | 185 | 29 | 6,3 kN | 9 | 1 | 1332 |
| H039033030 | 300 x 300 | 280 | 38 | 14,4 kN | 9 | 1 | 480 |
| H039034040 | 400 x 400 | 380 | 38 | 22,6 kN | 9 | 1 | 234 |
| H039035555 | 550 x 550 | 530 | 49 | 44,4 kN | 9 | 1 | 100 |

GRIGLIA CON MANIGLIA "STRONG"

GRATING WITH HANDLE "STRONG"

> COMPATIBILE CON POZZETTI E TELAI
MATERIALE: POLIPROPILENE COPOLIMERO CARICATO CON ANTI U.V.

> COMPATIBLE WITH DRAIN BOXES AND FRAMES
MATERIAL: COPOLYMER POLYPROPYLENE WITH ANTI-UV



Griglia
Grating

| CODICE CODE | MISURE SIZE | A | H | RESISTENZA RESISTANCE | PAG LISTINO PRICE LIST PAGE | PZ | PZ |
|----------------|----------------|-----|----|--------------------------|-----------------------------------|----|------|
| H033032020 | 200 x 200 | 185 | 29 | 6,1 kN | 10 | 1 | 1332 |
| H033033030 | 300 x 300 | 280 | 38 | 11,4 kN | 10 | 1 | 480 |
| H033034040 | 400 x 400 | 380 | 38 | 21,4 kN | 10 | 1 | 234 |
| H033035555 | 550 x 550 | 530 | 49 | 41,7 kN | 10 | 1 | 100 |

TELAIO E SIGILLO IN POLIPROPILENE

POLYPROPYLENE FRAME AND PAVING COVER

> MATERIALE: POLIPROPILENE COPOLIMERO CARICATO CON ANTI U.V.
 > MATERIAL: COPOLYMER POLYPROPYLENE WITH ANTI-UV



Dettaglio sigillo
 Seal detail



Sigillo

Cover to be paved

| CODICE CODE | MISURE SIZE | B | H1 | PAG LISTINO PRICE LIST PAGE | PZ | PZ |
|----------------|----------------|-----|----|--------------------------------|--------|--------|
| H036300300 | 300 x 300 | 280 | 21 | 10 | 10 | 250 |
| H036400400 | 400 x 400 | 380 | 25 | 10 | 10 | 200 |

Telaio per sigillo

Frame for cover to be paved

| CODICE CODE | MISURE SIZE | S | B | H | PAG LISTINO PRICE LIST PAGE | PZ | PZ |
|----------------|----------------|-----|-----|----|--------------------------------|--------|--------|
| H031300303 | 300 x 300 | 331 | 284 | 42 | 10 | - | - |
| H031400403 | 400 x 400 | 424 | 382 | 45 | 10 | - | - |

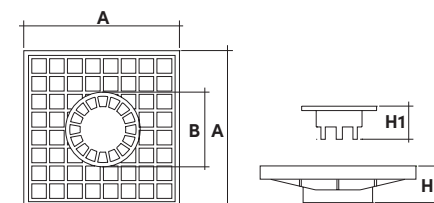
TELAIO + COPERCHIO CON SIFONE CENTRALE

FRAME + DRAIN COVER WITH CENTRAL SIPHON

> MATERIALE: POLIPROPILENE COPOLIMERO CARICATO CON ANTI U.V.
 > MATERIAL: COPOLYMER POLYPROPYLENE WITH ANTI-UV



Dettaglio sifone
 Siphon detail



Sigillo

Cover to be paved

| CODICE CODE | MODELLO MODEL | MISURE SIZE | A | B | L | H1 | H2 | H3 | PAG LISTINO PRICE LIST PAGE | PZ | PZ |
|----------------|--|----------------|-----|-----|-----|----|----|----|--------------------------------|--------|--------|
| H046013030 | Telaio + Coperchio con sifone Frame + Cover with siphon | 300 x 300 | 280 | 135 | 315 | 55 | 60 | 40 | 11 | 10 | 280 |
| H046014040 | Telaio + Coperchio con sifone Frame + Cover with siphon | 400 x 400 | 380 | 175 | 435 | 76 | 85 | 45 | 11 | 7 | 140 |

POZZETTO PLUVIALE SIFONATO CON USCITA LATERALE

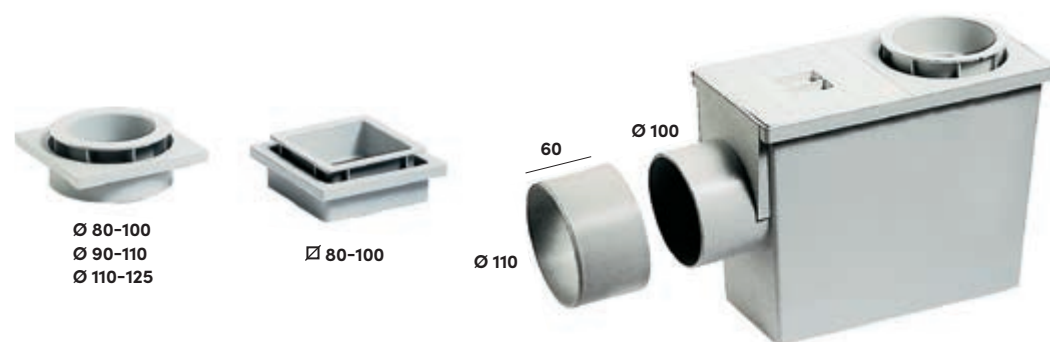
RAIN TRAP WITH SIDE EXIT

IT

È realizzato in polipropilene per mantenere inalterate nel tempo le proprie caratteristiche e la resistenza agli agenti atmosferici, chimici ed al gelo. È predisposto per l'innesto verticale di tubi da Ø 80 a 125 mm e quadrati sezione 80x80 e 100x100 mm mentre l'uscita laterale è per tubi Ø 100 mm oppure Ø 110 mm grazie all'apposito raccordo.

EN

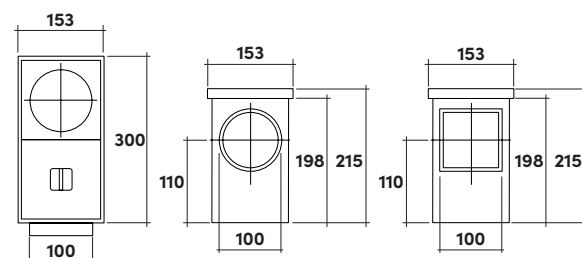
It is manufactured in polypropylene to maintain its characteristics and resistance against atmospheric and chemical agents and to frost in time. It's provided with couplings for round pipes from Ø 80 - 125 mm or squared pipes section 80x80 or 100x100 mm. Side exit is for Ø 100 mm pipes or Ø 110 mm pipes using the proper adaptor.



Pozzetto pluviale con uscita laterale sigillo

Rain trap with side exit

| CODICE CODE | MODELLO MODEL | B | PAG LISTINO PRICE LIST PAGE | PZ | PZ |
|----------------|------------------|----------|--------------------------------|----|-----|
| G021180100 | Ø 80-100 | Ø 100 mm | 11 | 15 | 120 |
| G025090110 | Ø 90-110 | Ø 100 mm | 11 | 15 | 120 |
| G025110125 | Ø 110-125 | Ø 100 mm | 11 | 15 | 120 |
| G022180100 | 80-100 | Ø 100 mm | 11 | 15 | 120 |



Raccordo

Fitting

| CODICE CODE | USCITA TUBO EXIT PIPE | PAG LISTINO PRICE LIST PAGE | PZ | PZ |
|----------------|--------------------------|--------------------------------|-----|------|
| G040000110 | Ø 100 mm | 12 | 100 | 2000 |



POZZETTO PLUVIALE SIFONATO CON USCITA VERTICALE

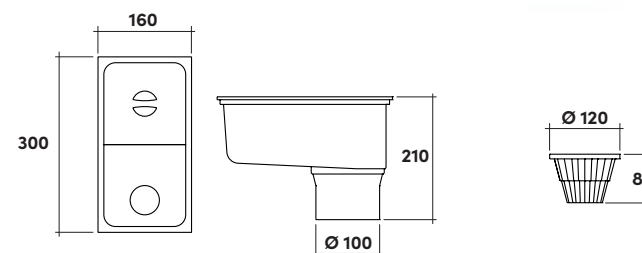
RAIN TRAP WITH VERTICAL EXIT

IT

È realizzato anch'esso in polipropilene ed è predisposto per l'innesto verticale di tubi da Ø 75 a 110 mm. Si differenzia dal modello con uscita laterale per l'uscita verticale Ø 110 mm. Inclusa viene fornita un'apposita para-foglia antiocclusione.

EN

It is manufactured in polypropylene as well and it is provided with couplings for round pipes from Ø 75 to 110 mm. The down-exit for Ø 110 mm pipes makes it different from the model with side exit. A special leaf-guard is also included.



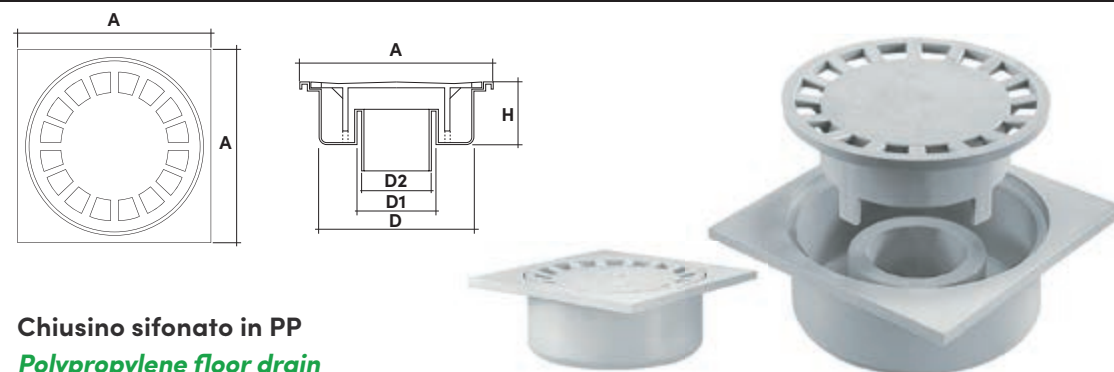
Pozzetto pluviale con uscita verticale

Rain trap with vertical exit

| CODICE CODE | ENTRATA TUBO ENTRY DOWNPIPE | USCITA TUBO EXIT PIPE | PAG LISTINO PRICE LIST PAGE | PZ | PZ |
|----------------|--------------------------------|--------------------------|--------------------------------|----|-----|
| G026075110 | Ø 75-90-100-110 | Ø 100 mm | 12 | 10 | 160 |

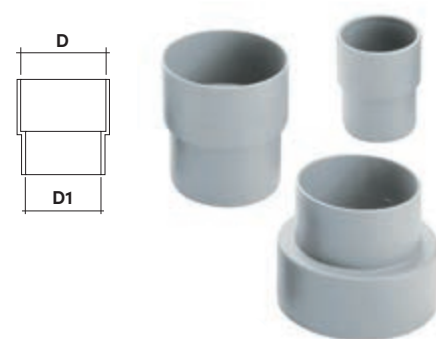
CHIUSINO SIFONATO IN PP RACCORDI PER CHIUSINO

POLYPROPYLENE FLOOR DRAINS - CONNECTIONS
FOR FLOOR DRAIN



Chiusino sifonato in PP
Polypropylene floor drain

| CODICE CODE | MISURA SIZE | COLORE COLOUR | USCITA TUBO EXIT PIPE | A | D | D1 | D2 | H | PAG LISTINO PRICE LIST PAGE | PZ PZ | PZ |
|----------------|----------------|------------------|-----------------------------|-----|-----|----|----|----|--------------------------------------|----------|------|
| I001100040 | 100 x 100 | Grigio / Grey | Ø 40 | 99 | 88 | 49 | 40 | 50 | 12 | 48 | 4608 |
| I001150050 | 150 x 150 | Grigio / Grey | Ø 50 | 147 | 124 | 60 | 50 | 55 | 12 | 32 | 1536 |
| I001250080 | 250 x 250 | Grigio / Grey | Ø 80 | 247 | 170 | 90 | 80 | 75 | 12 | 20 | 320 |
| I002100040 | 100 x 100 | Bianco / White | Ø 40 | 99 | 88 | 49 | 40 | 50 | 12 | 40 | 2800 |
| I002150050 | 150 x 150 | Bianco / White | Ø 50 | 147 | 124 | 60 | 50 | 55 | 12 | 30 | 1260 |
| I002200080 | 200 x 200 | Bianco / White | Ø 80 | 198 | 170 | 90 | 80 | 75 | 12 | 20 | 600 |
| I002250080 | 250 x 250 | Bianco / White | Ø 80 | 247 | 170 | 90 | 80 | 75 | 12 | 20 | 320 |



Raccordo per chiusino sifonato in PP
Connections for polypropylene floor drain

| CODICE CODE | MISURA SIZE | COLORE COLOUR | USCITA TUBO EXIT PIPE | D | D1 | PAG LISTINO PRICE LIST PAGE | PZ PZ | PZ |
|----------------|----------------|------------------|-----------------------------|-----|----|--------------------------------------|----------|------|
| I030050050 | 50 / 50 | Grigio / Grey | Ø 50 | 50 | 45 | 13 | 30 | 2100 |
| I030080075 | 80 / 75 | Grigio / Grey | Ø 75 | 80 | 70 | 13 | 20 | 1400 |
| I030080110 | 80 / 110 | Grigio / Grey | Ø 110 | 102 | 79 | 13 | 20 | 1400 |



Chiusino sifonato in polipropilene con doppia uscita
Polypropylene floor drain with double exit

| CODICE CODE | MISURA SIZE | COLORE COLOUR | USCITA EXIT | A | D | D1 | D2 | H | PAG LISTINO PRICE LIST PAGE | PZ PZ | PZ |
|----------------|----------------|------------------|----------------|-----|-----|----|-----|-----|--------------------------------------|----------|-----|
| I005200075 | 200 x 200 | Grigio / Grey | Ø 75-80 mm | 200 | 155 | 74 | 76 | 85 | 13 | 20 | 600 |
| I005250090 | 250 x 250 | Grigio / Grey | Ø 90-100 mm | 250 | 205 | 89 | 96 | 80 | 13 | 20 | 320 |
| I005300100 | 300 x 300 | Grigio / Grey | Ø 100-110 mm | 300 | 245 | 98 | 106 | 100 | 13 | 8 | 140 |

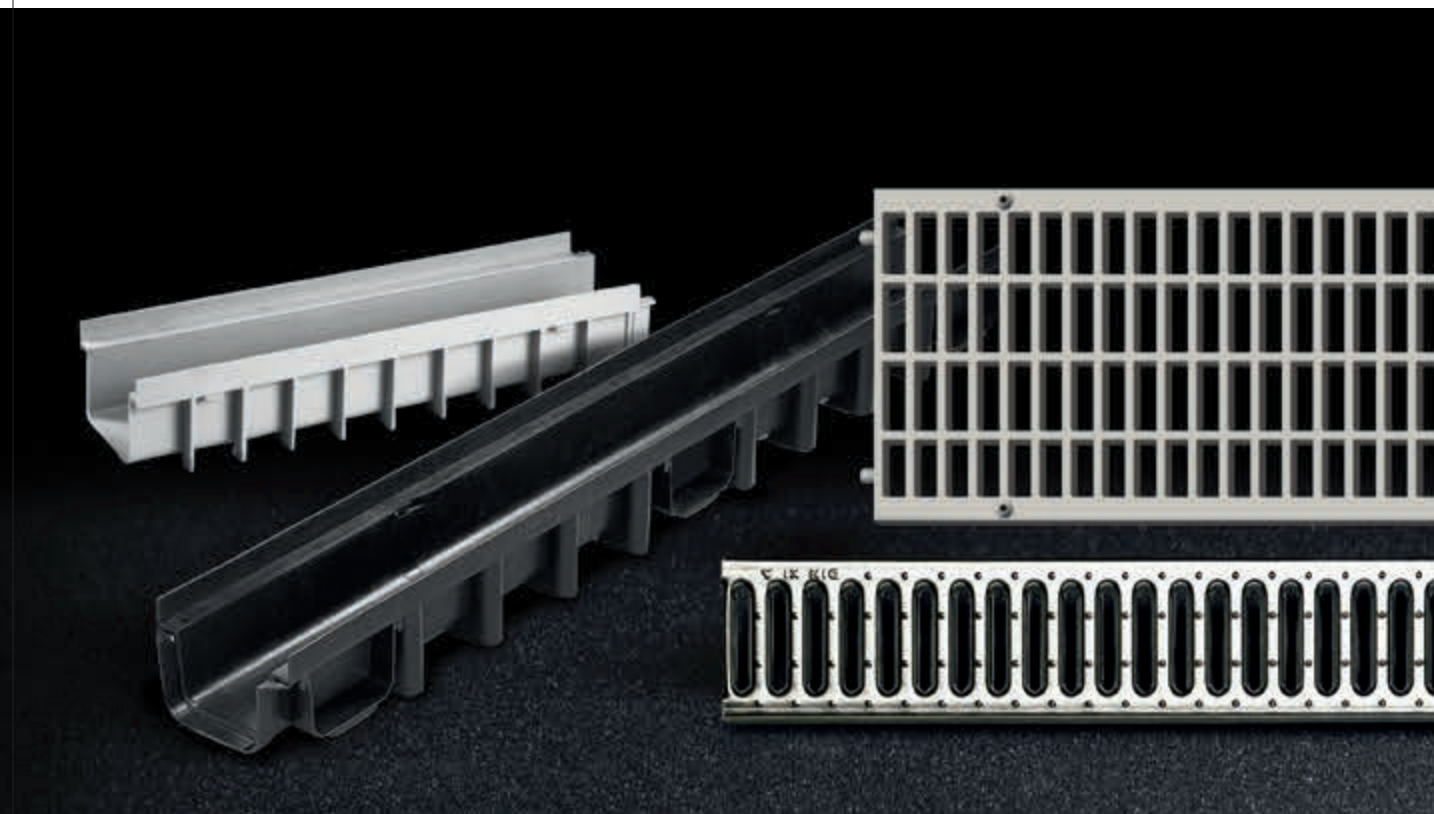


Chiusino sifonato in polipropilene con scarico laterale
Polypropylene floor drain with side exit

| CODICE CODE | MISURA SIZE | TIPO COPERCHIO TYPE COVER | COLORE COLOUR | USCITA EXIT | A | B | D | H | H1 | PAG LISTINO PRICE LIST PAGE | PZ PZ | PZ |
|----------------|----------------|---------------------------------|------------------|----------------|-----|----|----|----|----|--------------------------------------|----------|------|
| I004100050 | 100 x 100 | PP | Grigio / Grey | Ø 50 | 108 | 45 | 50 | 79 | 67 | 13 | 36 | 1000 |
| I004150050 | 150 x 150 | PP | Grigio / Grey | Ø 50 | 150 | 45 | 50 | 81 | 69 | 13 | 42 | 900 |
| I015100050 | 100 x 100 | Inox | Inox / Inox | Ø 50 | 108 | 45 | 50 | 79 | 67 | 13 | 40 | 1000 |
| I015150050 | 150 x 150 | Inox | Inox / Inox | Ø 50 | 150 | 45 | 50 | 81 | 69 | 13 | 42 | 900 |

CANALETTE MODULARI E GRIGLIE METALLICHE

MODULAR GUTTERS AND METALLIC GRATINGS



IT

Prodotti pensati per l'utilizzo in ambienti ad alta frequenza di passaggio, dove la robustezza e l'efficacia sono caratteristiche irrinunciabili.

Le canalette modulari permettono di adattarsi anche ai progetti più complessi e alle superfici più ampie; le griglie metalliche garantiscono il massimo dell'igiene e della durata anche in spazi ad alta intensità di calpestio come piscine e palestre.

EN

Products designed for high-traffic environments in which durability and effectiveness are of fundamental importance.

The modular gutters can even be adapted for use with the most complex projects and larger surfaces; the metallic gratings guarantee maximum hygiene and durability, even in high-traffic areas like swimming pools and gyms.

CANALETTA MODULARE "MAXIMA" IN PP
PP MODULAR CHANNEL "MAXIMA" TYPE

CANALETTA MODULARE "SPECIAL" IN PP
PP MODULAR CHANNEL "SPECIAL" TYPE

CANALETTA MODULARE "STANDARD" IN PP
PP MODULAR CHANNEL "STANDARD" TYPE

GRIGLIE IN PP PER CANALETTA
PP GRATING FOR MODULAR CHANNEL

GRIGLIE METALLICHE PER CANALETTA
CLASSE A15 E C250
METAL GRATINGS FOR MODULAR CHANNEL CLASS A15 AND C250

GRIGLIE METALLICHE PER CANALETTA
CLASSE A15 E B125
METAL GRATINGS FOR MODULAR CHANNEL CLASS A15 AND B125

CANALETTA MODULARE "MAXIMA" IN PP CON TAPPO DI USCITA E CHIUSURA

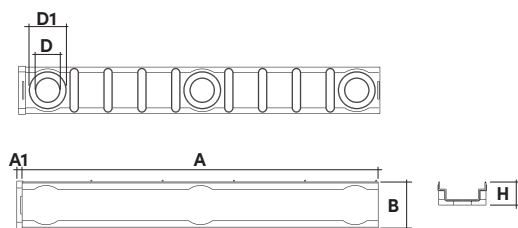
POLYPROPYLENE MODULAR CHANNEL "MAXIMA" TYPE WITH END CAP EXIT AND CLOSURE

IT

La nuova canaletta "MAXIMA" è realizzata in polipropilene alta qualità. Ogni elemento è lungo 1000 mm ed è predisposto sul fondo di tre uscite per il raccordo di tubi di scarico. Particolarità della canaletta "MAXIMA" è la predisposizione su entrambi i lati per l'aggancio di una stessa canaletta per eseguire con facilità angoli a 90° oppure raccordi a T. È infine disponibile un tappo per entrambi i lati che a scelta può essere di uscita o cieco. Ampia la gamma di griglie che possono essere utilizzate a completamento.

EN

The new "MAXIMA" drainage channel is manufactured in high quality polypropylene. Every element is 1000 mm long and provided with 3 vertical water outlets where drainage pipes can be joined. The main feature of the "MAXIMA" channel is the possibility to connect another channel on both sides. No couplings are needed for a perfect 90° or a T application. End caps for both edges are available for water outlet or blind closure. A wide range of plastic and metal gratings is available.

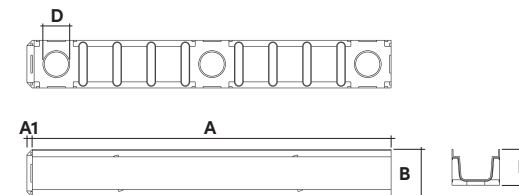
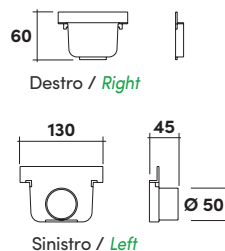


Canaletta "MAXIMA" H60mm
"MAXIMA" channel H60mm

| CODICE CODE | MISURA SIZE | TIPO TYPE | USCITA TUBO EXIT PIPE | A | A1 | B | D | D1 | H | PAG LISTINO PRICE LIST PAGE | PZ | PZ |
|----------------|----------------|--------------|-----------------------------|------|----|-----|----|-----|----|--------------------------------------|----|-----|
| I050213100 | 130 x 1000 | h. 60 mm | Ø 75-110 mm | 1000 | 20 | 131 | 70 | 105 | 63 | 15 | 20 | 240 |

Tappo uscita e chiusura per canaletta "MAXIMA"
End caps for "MAXIMA" channel

| CODICE CODE | TIPO TYPE | PER CANALETTA FOR CHANNEL | USCITA TUBO EXIT PIPE | PAG LISTINO PRICE LIST PAGE | PZ | PZ |
|----------------|----------------------------------|---------------------------------|-----------------------------|--------------------------------------|-----|----|
| I070213120 | Tappo Destro / Right End Cap | h. 60 mm | - | 15 | 150 | - |
| I070213110 | Tappo Sinistro / Left End Cap | h. 60 mm | Ø 45 mm | 15 | 60 | - |

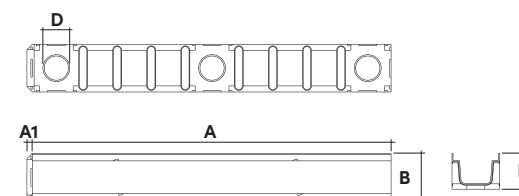
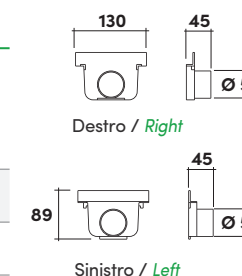


Canaletta "MAXIMA" H100mm
"MAXIMA" channel H100mm

| CODICE CODE | MISURA SIZE | TIPO TYPE | USCITA TUBO EXIT PIPE | A | A1 | B | D | D1 | H | PAG LISTINO PRICE LIST PAGE | PZ | PZ |
|----------------|----------------|--------------|-----------------------------|------|----|-----|-----|----|-----|--------------------------------------|----|-----|
| I050313100 | 130 x 1000 | h. 100 mm | Ø 110 mm | 1000 | 20 | 131 | 103 | - | 100 | 15 | 15 | 180 |

Tappo uscita e chiusura per canaletta "MAXIMA"
End caps for "MAXIMA" channel

| CODICE CODE | TIPO TYPE | PER CANALETTA FOR CHANNEL | USCITA TUBO EXIT PIPE | PAG LISTINO PRICE LIST PAGE | PZ | PZ |
|----------------|----------------------------------|---------------------------------|-----------------------------|--------------------------------------|----|----|
| I070313100 | Tappo Destro / Right End Cap | h. 100 mm | Ø 50 mm | 15 | 45 | - |
| I070313110 | Tappo Sinistro / Left End Cap | h. 100 mm | Ø 50 mm | 15 | 45 | - |

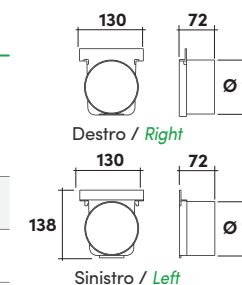


Canaletta "MAXIMA" H150mm
"MAXIMA" channel H150mm

| CODICE CODE | MISURA SIZE | TIPO TYPE | USCITA TUBO EXIT PIPE | A | A1 | B | D | D1 | H | PAG LISTINO PRICE LIST PAGE | PZ | PZ |
|----------------|----------------|--------------|-----------------------------|------|----|-----|-----|----|-----|--------------------------------------|----|-----|
| I050413100 | 130 x 1000 | h. 150 mm | Ø 110 mm | 1000 | 20 | 131 | 103 | - | 150 | 15 | 10 | 120 |

Tappo uscita e chiusura per canaletta "MAXIMA"
End caps for "MAXIMA" channel

| CODICE CODE | TIPO TYPE | PER CANALETTA FOR CHANNEL | USCITA TUBO EXIT PIPE | PAG LISTINO PRICE LIST PAGE | PZ | PZ |
|----------------|----------------------------------|---------------------------------|-----------------------------|--------------------------------------|----|----|
| I070413100 | Tappo Destro / Right End Cap | h. 150 mm | Ø 110 mm | 15 | 20 | - |
| I070413110 | Tappo Sinistro / Left End Cap | h. 150 mm | Ø 110 mm | 15 | 20 | - |



CANALETTA MODULARE "SPECIAL" IN PP CON TAPPO

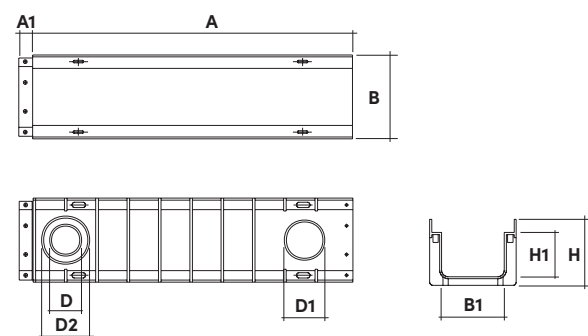
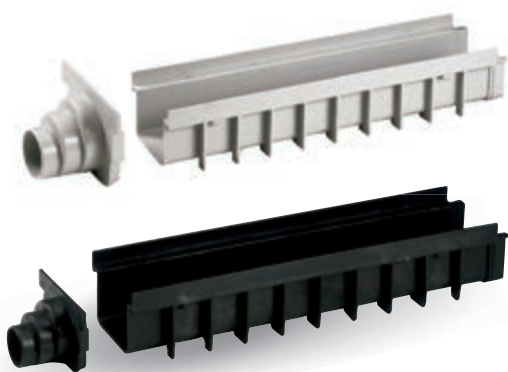
POLYPROPYLENE MODULAR CHANNEL "SPECIAL" TYPE WITH END CAP

IT

Realizzata in polipropilene, è dotata di consistenti coste laterali di rinforzo che la rendono molto più robusta del modello standard. Ogni elemento, di lunghezza 500 mm è predisposto sul fondo di 2 diametri d'uscita. A completare la gamma, una vasta scelta di griglie in polipropilene o metalliche.

EN

Manufactured in polypropylene, it is provided with high resistant reinforcement side ribs. Every element, 500 mm long, has 2 different vertical exits on the bottom. A wide range of polypropylene and metal gratings completes the range.

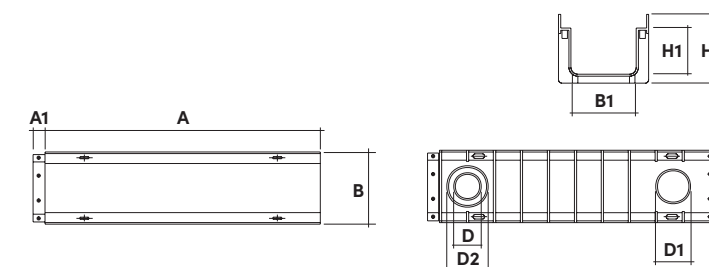
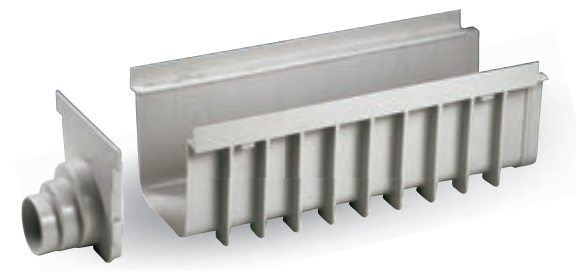
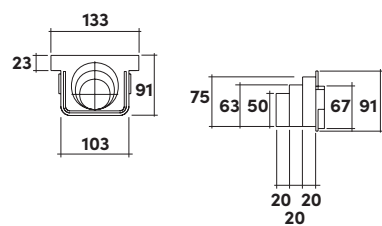


Canaletta "SPECIAL" 130x500mm grigia/nera
Grey/blackchannel "SPECIAL" 130x500mm

| CODICE CODE | MISURA SIZE | TIPO TYPE | COLORE COLOUR | USCITA TUBO EXIT PIPE | A | A1 | B | B1 | D | D1 | D2 | H | H1 | PAG LISTINO PRICE LIST PAGE | PZ | PZ |
|----------------|----------------|--------------|------------------|--------------------------|-----|----|-----|----|----|----|----|-----|----|--------------------------------|----|-----|
| I050113051 | 130 x 500 | h. 100 mm | Grigio / Grey | Ø 50 - 63 - 75 mm | 500 | 20 | 133 | 95 | 50 | 63 | 75 | 100 | 67 | 16 | 20 | 320 |
| I050113050 | 130 x 500 | h. 100 mm | Nero / Black | Ø 50 - 63 - 75 mm | 500 | 20 | 133 | 95 | 50 | 63 | 75 | 100 | 67 | 16 | 20 | 320 |

Tappo SPECIAL grigio/nero
Grey/black end cap SPECIAL type

| CODICE CODE | USCITA TUBO EXIT PIPE | COLORE COLOUR | PAG LISTINO PRICE LIST PAGE | PZ | PZ |
|----------------|--------------------------|------------------|--------------------------------|-----|------|
| I070113051 | Ø 50 - 63 - 75 mm | Grigio / Grey | 16 | 100 | 4200 |
| I070113050 | Ø 50 - 63 - 75 mm | Nero / Black | 16 | 100 | 4200 |

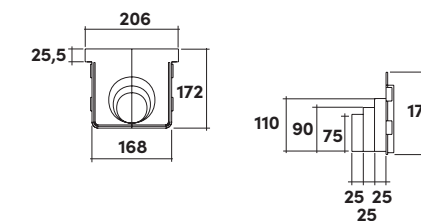


Canaletta "SPECIAL" 200x500mm grigia/nera
Grey/blackchannel "SPECIAL" 200x500mm

| CODICE CODE | MISURA SIZE | TIPO TYPE | COLORE COLOUR | USCITA TUBO EXIT PIPE | A | A1 | B | B1 | D | D1 | D2 | H | H1 | PAG LISTINO PRICE LIST PAGE | PZ | PZ |
|----------------|----------------|--------------|------------------|--------------------------|-----|----|-----|-----|----|-----|-----|-----|-----|--------------------------------|----|-----|
| I050120051 | 200 x 500 | h. 185 mm | Grigio / Grey | Ø 75 - 90 - 110 mm | 500 | 20 | 206 | 153 | 75 | 110 | 110 | 185 | 143 | 16 | 10 | 160 |
| I050120050 | 200 x 500 | h. 185 mm | Nero / Black | Ø 75 - 90 - 110 mm | 500 | 20 | 206 | 153 | 75 | 90 | 110 | 185 | 143 | 16 | 10 | 160 |

Tappo SPECIAL grigio/nero
Grey/black end cap SPECIAL type

| CODICE CODE | USCITA TUBO EXIT PIPE | COLORE COLOUR | PAG LISTINO PRICE LIST PAGE | PZ | PZ |
|----------------|--------------------------|------------------|--------------------------------|----|------|
| I070120051 | Ø 75 - 90 - 110 mm | Grigio / Grey | 16 | 25 | 1050 |
| I070120050 | Ø 75 - 90 - 110 mm | Nero / Black | 16 | 25 | 1050 |



CANALETTA MODULARE "STANDARD" IN PP CON TAPPO

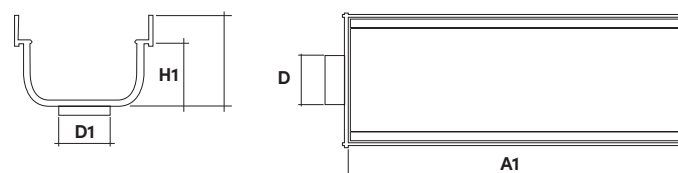
POLYPROPYLENE MODULAR CHANNEL "STANDARD" TYPE WITH END CAP

IT

Realizzata in polipropilene, è composta da elementi di lunghezza 500 mm che si innestano uno nell'altro. A completare la gamma, una vasta scelta di griglie in polipropilene o metalliche ed il nuovo raccordo laterale per curve a 90° o innesti a T.

EN

Manufactured in polypropylene, it consists of 500 mm long element that connect each other. A wide range of polypropylene and metal gratings and the new end coupling for 90° or T applications complete the range.



Canaletta modulare "STANDARD" in PP
Polypropylene modular channel "STANDARD" type

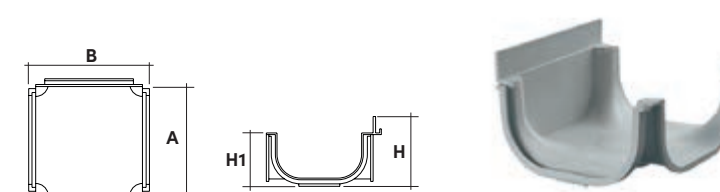
| CODICE CODE | MISURA SIZE | TIPO TYPE | COLORE COLOUR | USCITA TUBO EXIT PIPE | A | A1 | B | D | D1 | H | H1 | PAG LISTINO PRICE LIST PAGE | PZ | PZ |
|----------------|----------------|--------------|------------------|--------------------------|-----|-----|-----|----|----|----|----|--------------------------------|----|-----|
| I050013050 | 130 x 500 | h. 80 mm | Grigio / Grey | Ø 50 mm | 500 | 498 | 133 | 50 | 50 | 80 | 55 | 16 | 20 | 320 |



Tappo standard
End cap standard type

| CODICE CODE | MISURA SIZE | USCITA TUBO EXIT PIPE | COLORE COLOUR | PAG LISTINO PRICE LIST PAGE | PZ | PZ |
|----------------|----------------|--------------------------|------------------|--------------------------------|-----|----|
| I070013050 | 130 x 500 | Ø 50 mm | Grigio / Grey | 16 | 100 | - |

Raccordo angolare
End coupling



| CODICE CODE | COLORE COLOUR | A | B | H | H1 | PAG LISTINO PRICE LIST PAGE | PZ | PZ |
|----------------|------------------|-----|-----|----|----|--------------------------------|----|----|
| I069013050 | Grigio / Grey | 133 | 133 | 80 | 50 | 17 | 25 | - |

GRIGLIA IN PP PER CANALETTA

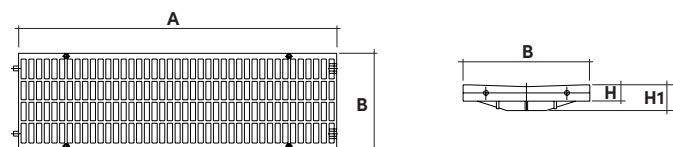
POLYPROPYLENE GRATING FOR MODULAR CHANNEL

IT

Le griglie in polipropilene, nei colori grigio e nero, sono disponibili nelle dimensioni di: 130x500 e 200x500 mm.

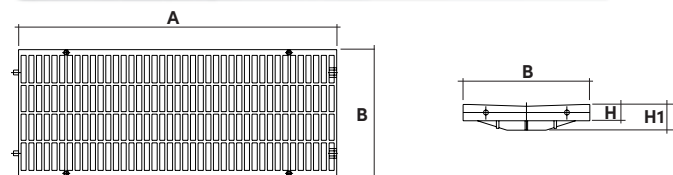
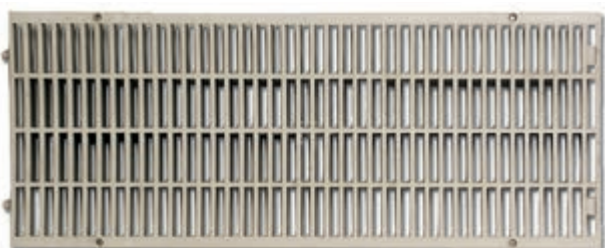
EN

Polypropylene gratings, manufactured in grey and black colour, are available in two sizes: 130x500 and 200x500 mm.



Griglia in PP per canaletta
Polypropylene grating for modular channel

| CODICE CODE | MISURA SIZE | TIPO TYPE | COLORE COLOUR | PER CANALETTA TIPO EXIT PIPE | A | B | H | H1 | PAG LISTINO PRICE LIST PAGE | PZ | PZ |
|----------------|----------------|---------------|------------------|---------------------------------|-----|-----|----|----|--------------------------------------|----|-----|
| I061213050 | 130 x 500 | PP classe A15 | Grigio / Grey | MAXIMA - SPECIAL - STANDARD | 500 | 126 | 20 | 30 | 17 | - | 684 |
| I061213051 | 130 x 500 | PP classe A15 | Nero / Black | MAXIMA - SPECIAL - STANDARD | 500 | 126 | 20 | 30 | 17 | - | 684 |



Griglia per canaletta in PP
Polypropylene grating for modular channel

| CODICE CODE | MISURA SIZE | TIPO TYPE | COLORE COLOUR | PER CANALETTA TIPO EXIT PIPE | A | B | H | H1 | PAG LISTINO PRICE LIST PAGE | PZ | PZ |
|----------------|----------------|---------------|------------------|---------------------------------|-----|-----|----|----|--------------------------------------|----|-----|
| I061220050 | 200 x 500 | PP classe A15 | Grigio / Grey | SPECIAL | 500 | 199 | 25 | 35 | 17 | - | 308 |
| I061220051 | 200 x 500 | PP classe A15 | Nero / Black | SPECIAL | 500 | 199 | 25 | 35 | 17 | - | 308 |

GRIGLIE METALLICHE PER CANALETTA CLASSE A15 E C250

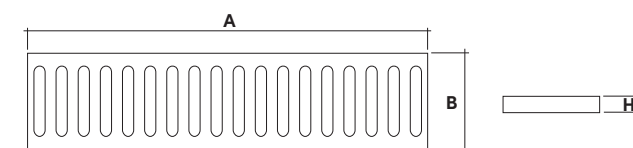
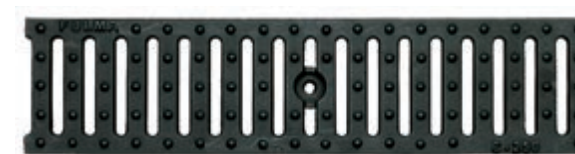
METAL GRATINGS FOR MODULAR CHANNEL CLASS A15 AND C250

IT

La gamma di griglie metalliche L.500 mm per canaletta è composta da modelli di classe A15 in ferro zincato, acciaio inox e di classe C250 in ghisa.

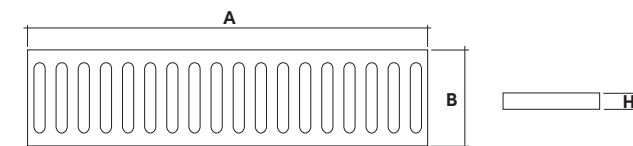
EN

The range of metal grating 500 mm long for drainage channel is composed by different models in zinc, stainless steel according to class A15 and in cast iron class C250.



Griglia metallica zincata
Zinc metal grid

| CODICE CODE | MISURA SIZE | TIPO TYPE | PER CANALETTA TIPO EXIT PIPE | A | B | H | PAG LISTINO PRICE LIST PAGE | PZ | PZ |
|----------------|----------------|---|---------------------------------|-----|-----|----|--------------------------------------|----|----|
| I061512350 | 130 x 500 | Ghisa classe C250 Cast-iron class C250 | MAXIMA - SPECIAL - STANDARD | 500 | 124 | 20 | 17 | - | - |
| I061520055 | 200 x 500 | Ghisa classe C250 Cast-iron class C250 | SPECIAL | 500 | 205 | 25 | 17 | - | - |



Griglia metallica in acciaio
Steel metal grid

| CODICE CODE | MISURA SIZE | TIPO TYPE | PER CANALETTA TIPO EXIT PIPE | A | B | H | PAG LISTINO PRICE LIST PAGE | PZ | PZ |
|----------------|----------------|--|---------------------------------|-----|-----|----|--------------------------------------|----|----|
| I061313052 | 130 x 500 | Acciaio inox classe A15 Stainless-steel class A15 | MAXIMA - SPECIAL - STANDARD | 500 | 124 | 20 | 17 | - | - |
| I061313051 | 130 x 500 | Zincata classe A15 Zinc class A15 | MAXIMA - SPECIAL - STANDARD | 500 | 124 | 20 | 17 | - | - |

GRIGLIE METALLICHE PER CANALETTA CLASSE A15 E B125

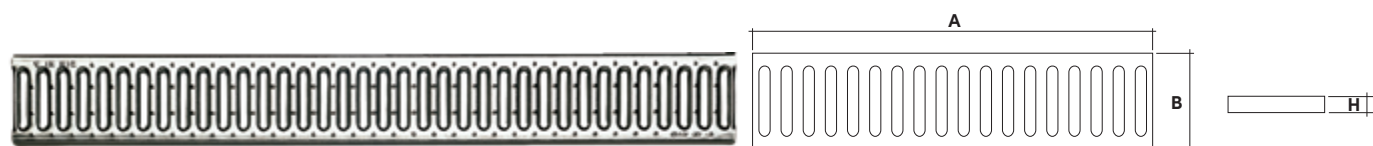
METAL GRATINGS FOR MODULAR CHANNEL
CLASS A15 AND B125

IT

La gamma di griglie metalliche L.1000 mm per canaletta è composta da vari modelli in ferro zincato di classe A15 e B125.

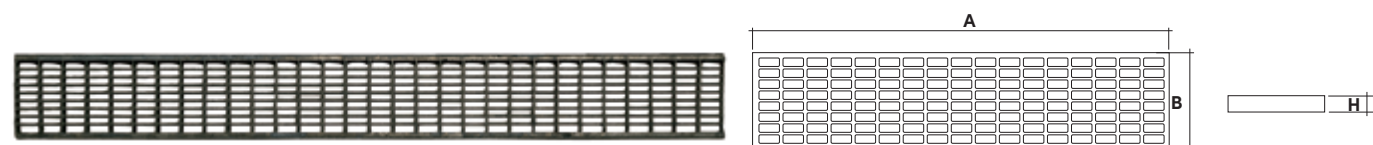
EN

The range of metal gratings 1000 mm long for drainage channel is composed by different models in zinc according to class A15 and B125.



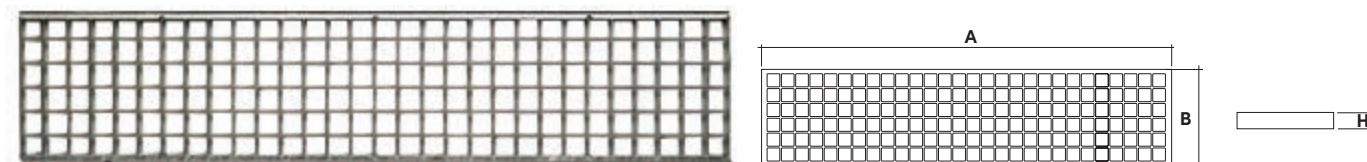
Griglia metallica zincata
Zinc metal grid

| CODICE CODE | MISURA SIZE | TIPO TYPE | PER CANALETTA TIPO EXIT PIPE | MAGLIA MESH | A | B | H | PAG LISTINO PRICE LIST PAGE | PZ | PZ |
|----------------|----------------|--------------------------------------|---------------------------------|----------------|------|-----|----|--------------------------------------|----|----|
| I061313101 | 130 x 1000 | Zincata classe A15 Zinc class A15 | MAXIMA - SPECIAL - STANDARD | - | 1000 | 124 | 20 | 17 | - | - |



Griglia metallica zincata
Zinc metal grid

| CODICE CODE | MISURA SIZE | TIPO TYPE | PER CANALETTA TIPO EXIT PIPE | MAGLIA MESH | A | B | H | PAG LISTINO PRICE LIST PAGE | PZ | PZ |
|----------------|----------------|--|---------------------------------|----------------|------|-----|----|--------------------------------------|----|----|
| I061413101 | 130 x 1000 | Zincata classe B125 Zinc class B125 | MAXIMA - SPECIAL - STANDARD | - | 1000 | 124 | 20 | 17 | - | - |



Griglia metallica zincata
Zinc metal grid

| CODICE CODE | MISURA SIZE | TIPO TYPE | PER CANALETTA TIPO EXIT PIPE | MAGLIA MESH | A | B | H | PAG LISTINO PRICE LIST PAGE | PZ | PZ |
|----------------|----------------|--|---------------------------------|----------------|------|-----|----|--------------------------------------|----|----|
| I061420101 | 200 x 1000 | Zincata classe B125 Zinc class B125 | SPECIAL | 33 x 33 | 1000 | 199 | 25 | 17 | - | - |



Griglia metallica zincata
Zinc metal grid

| CODICE CODE | MISURA SIZE | TIPO TYPE | PER CANALETTA TIPO EXIT PIPE | MAGLIA MESH | A | B | H | PAG LISTINO PRICE LIST PAGE | PZ | PZ |
|----------------|----------------|--|---------------------------------|----------------|------|-----|----|--------------------------------------|----|----|
| I061420111 | 200 x 1000 | Zincata classe B125 Zinc class B125 | SPECIAL | 33 x 11 | 1000 | 199 | 25 | 17 | - | - |

Classi di carico secondo norma DIN 19580 Loading class according to norm DIN 19580

| SIMBOLI SYMBOLS | CLASSI CLASSES | RESISTENZA RESISTANCE | DESCRIZIONE - CAMPI D'IMPIEGO DESCRIPTION - SECTOR OF USE |
|--------------------|-------------------|--------------------------|---|
| | A 15 | kN 15 | Superfici adatte al traffico leggero, passaggi pedonali, zone verdi, balconi, terrazze. Surface suitable to light traffic, crosswalks, green areas, balconies, terraces. |
| | B 125 | kN 125 | Sentieri, zone pedonali, parcheggi auto, parcheggi sopraelevati. Paths, pedestrian areas, parking lots, parking garages. |
| | C 250 | kN 250 | Canalizzazioni al bordo di strade, accessi a parcheggi auto e parcheggi sopraelevati. Canalizations along roads, entrances to parking lots and parking garages. |

MADE IN ITALY

ETERNO IVICA SRL

Via Austria, 25/E
35127 Padova - Italy

T. ITA +39 049 8530101
T. EXP +39 049 8530102
FAX +39 049 8530111

www.eternoivica.com
eternoivica@eternoivica.com

eternoivica |



MADE IN ITALY

www.eternoivica.com

eternoivica